

# SCALARWORKS®

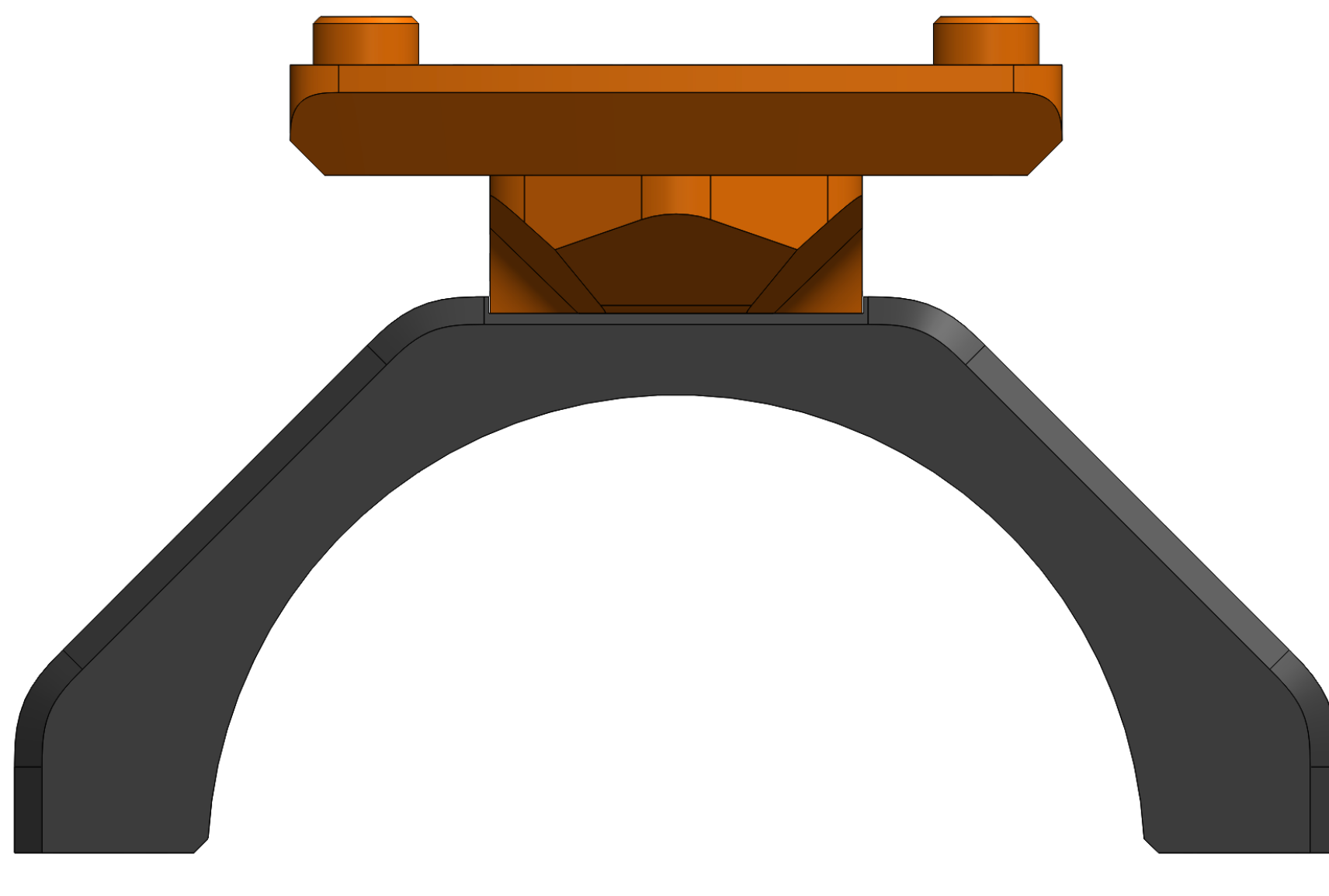
S H O O T E R D R I V E N ®

## KICK/06

OWNER'S MANUAL



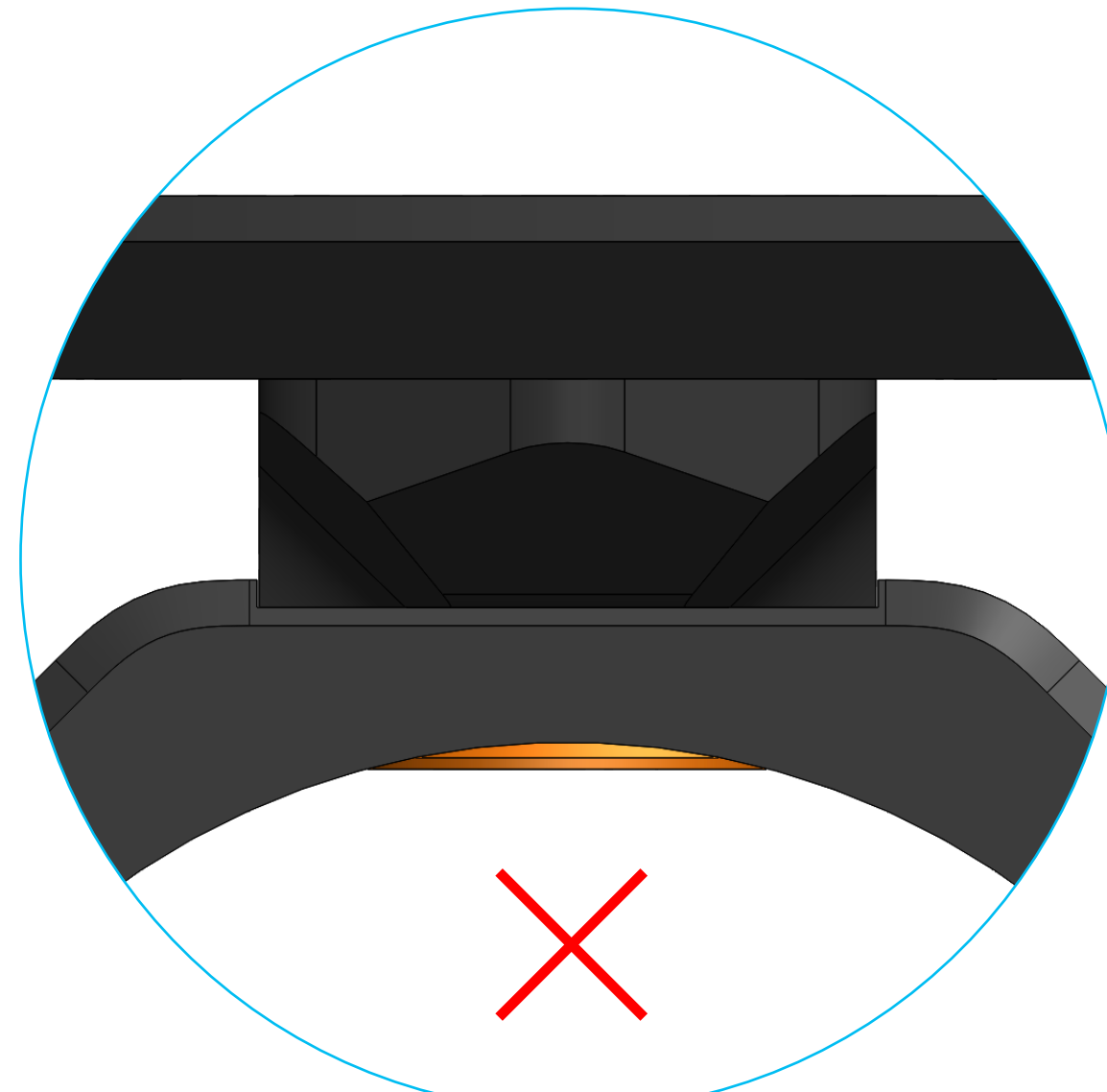
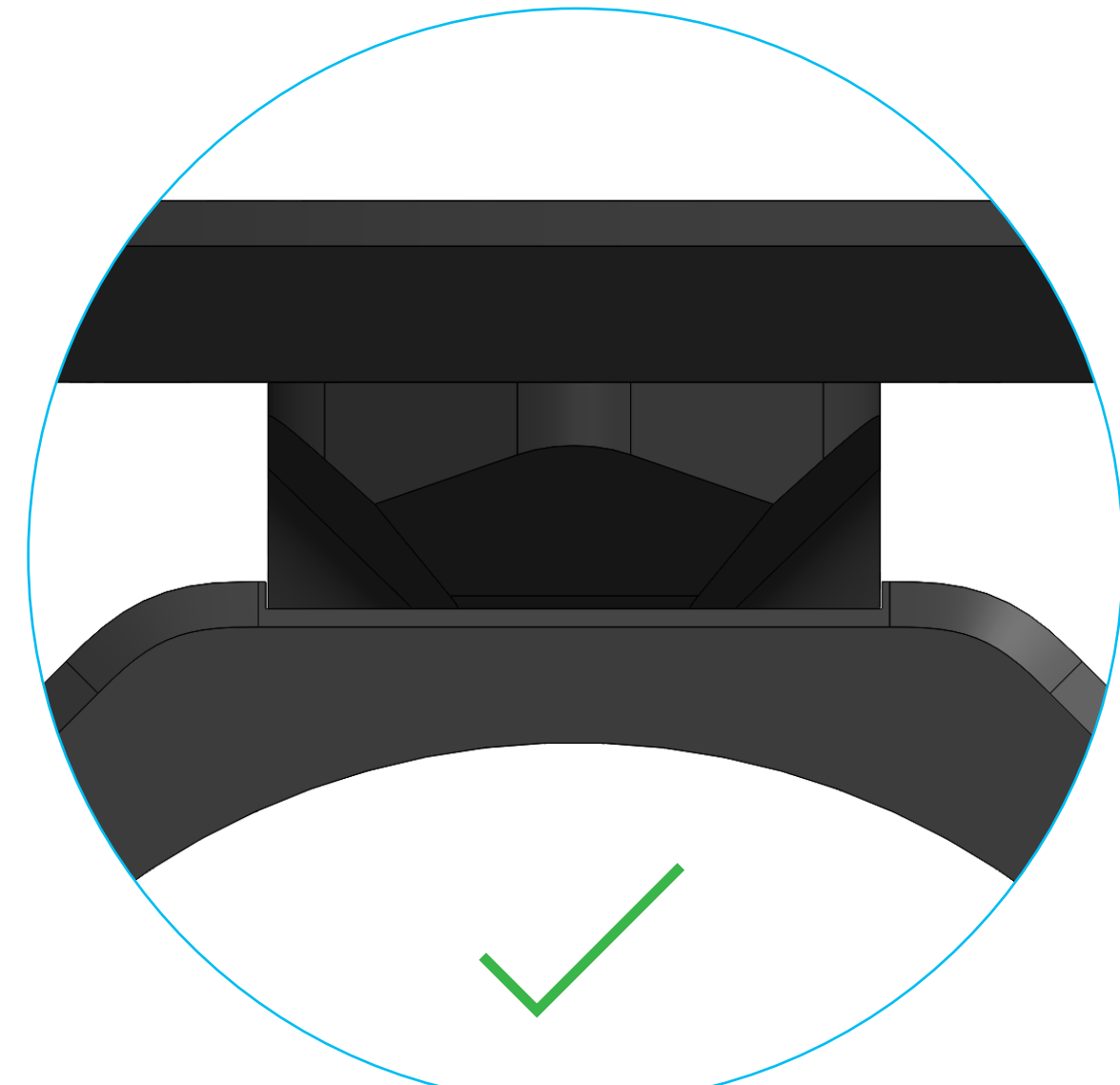
01. Seat KICK mount in machined ring slot.



02. Tighten each KICK mount screw, as many times as needed until torque stabilizes at 40inch-lbs.



03. Visually inspect that KICK screws are not protruding into the ring opening.



04. Attach RMR to mount using supplied screws. Tighten screws to 15inch-lbs.



05. Follow standard ring installation instructions for your FUSE scope mount.

[Owner's Manuals](#)

Questions?

[Email Support](#)